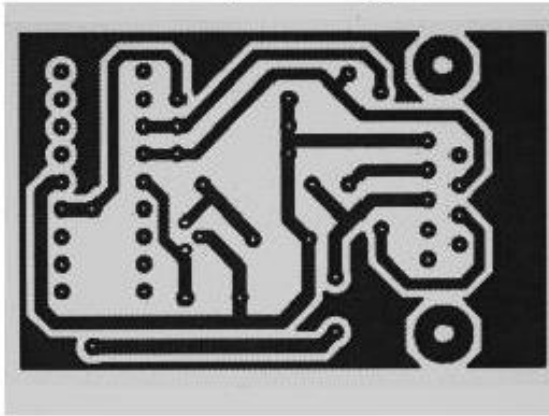
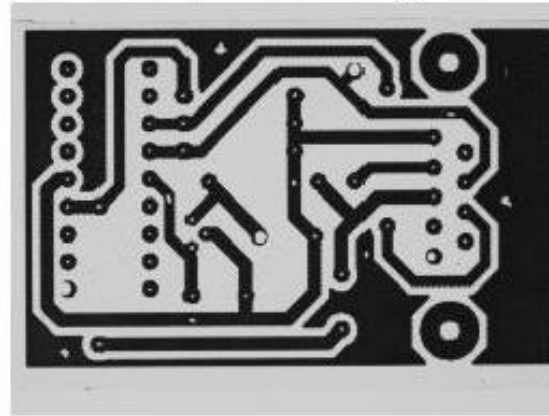


# Breakouts & Pinholes test results in real-life test conditions

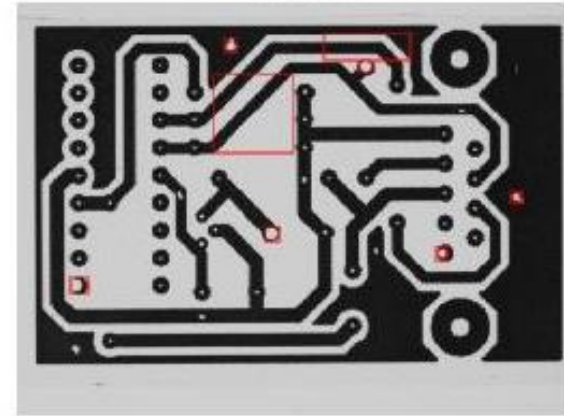
Templet Image



Inspection Image

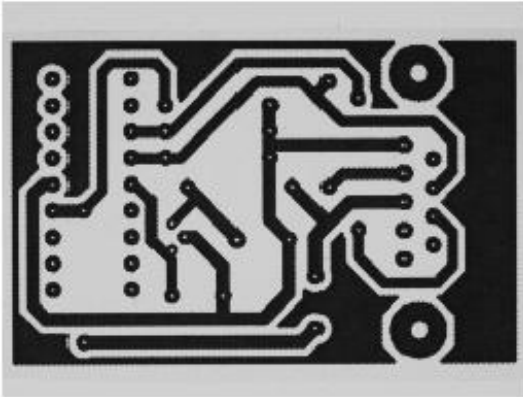


Defects

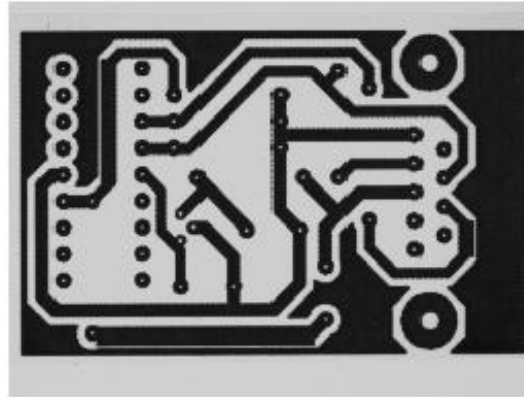


# Conductor too close test results in real-life test conditions

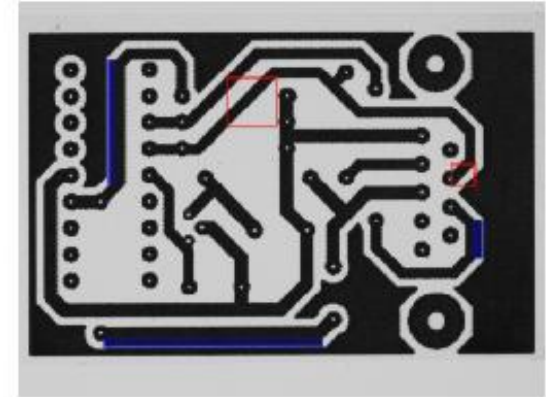
Templet Image



Inspection Image

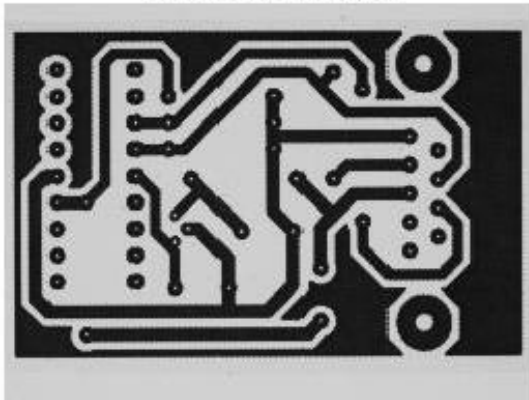


Defects

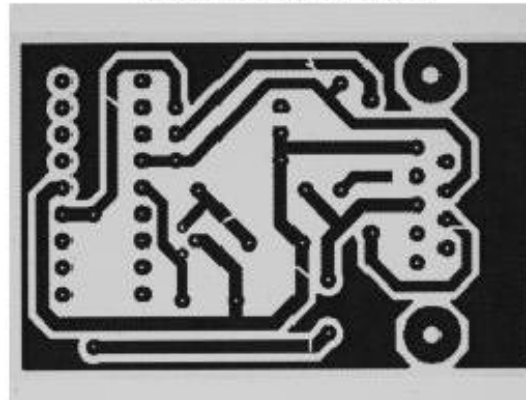


# Missing Conductor & Open circuits test results in real-life test conditions

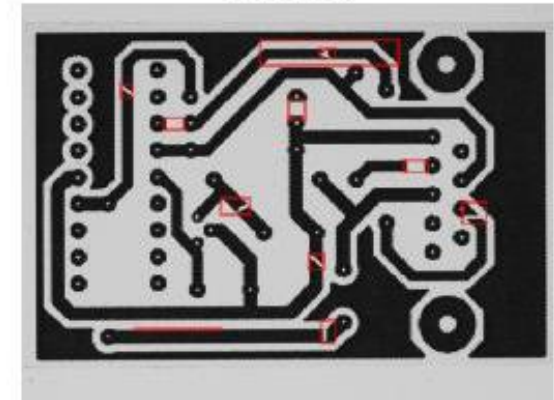
Templet Image



Inspection Image

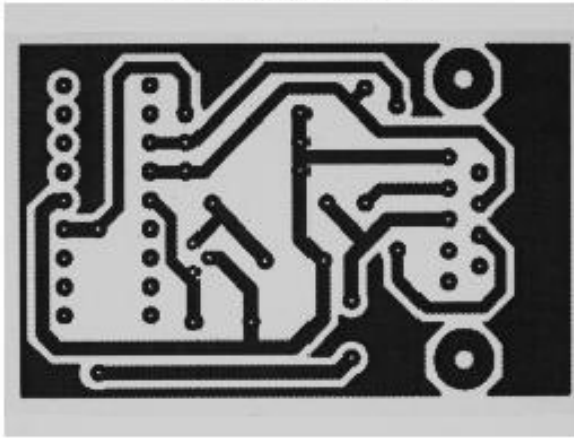


Defects

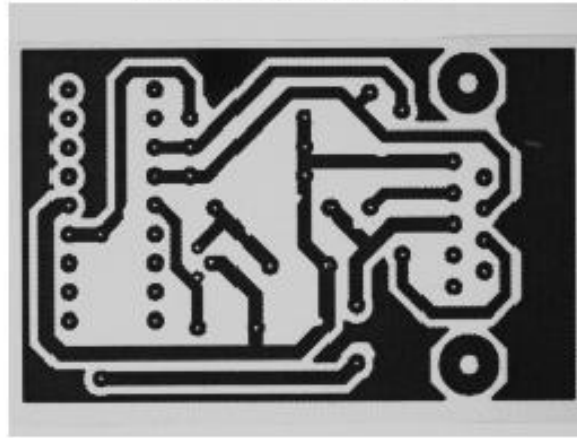


# Mouses bite & Over etch test results in real-life test conditions

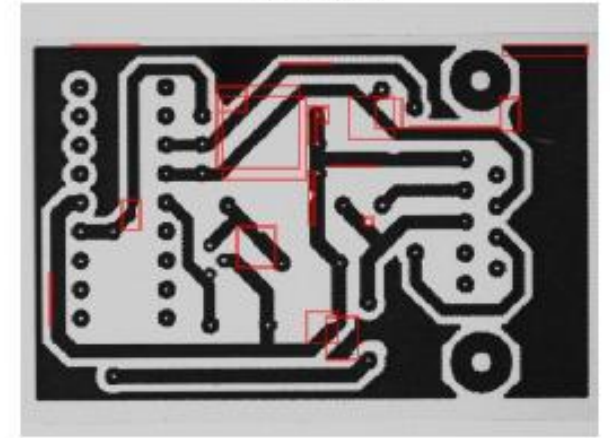
**Templet Image**



**Inspection Image**

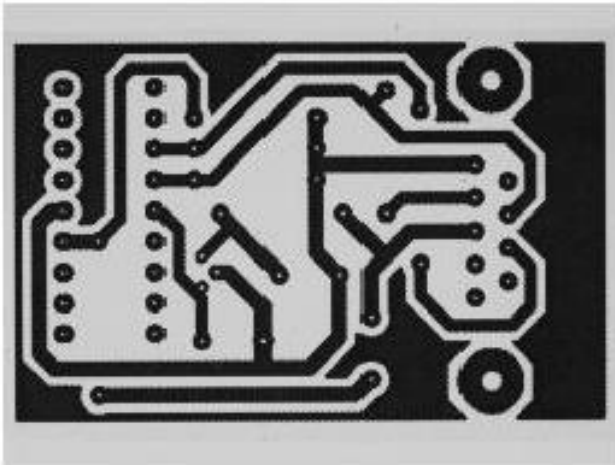


**Defects**

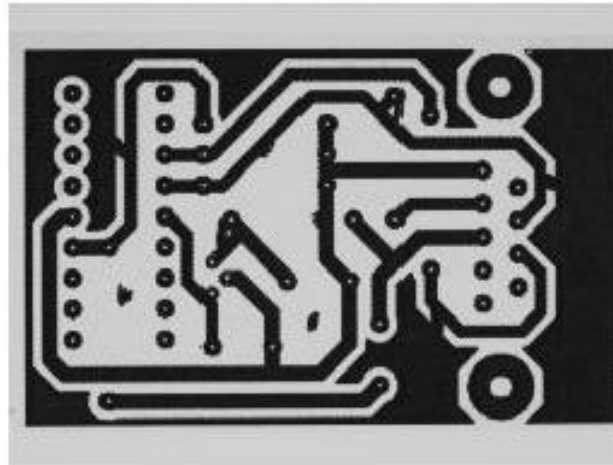


# Spur, Spurious copper, Excessive Shorts & Shorts test results in real-life test conditions

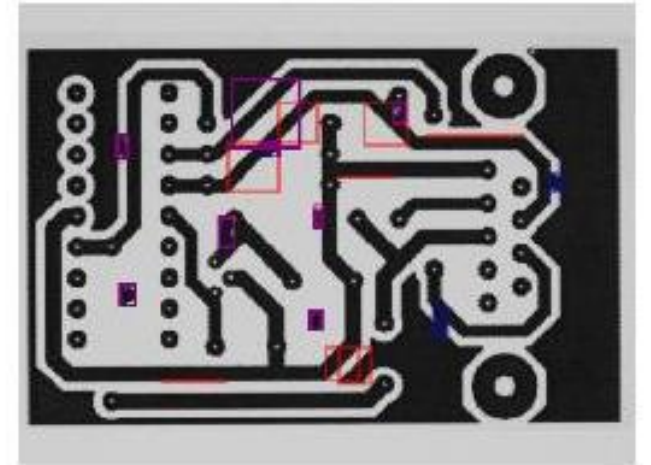
Templet Image



Inspection Image



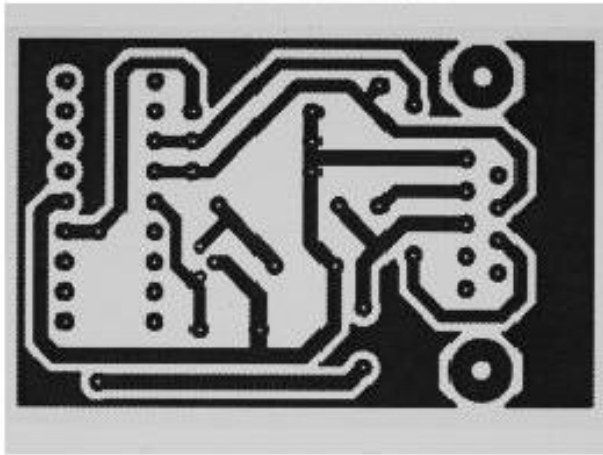
Defects



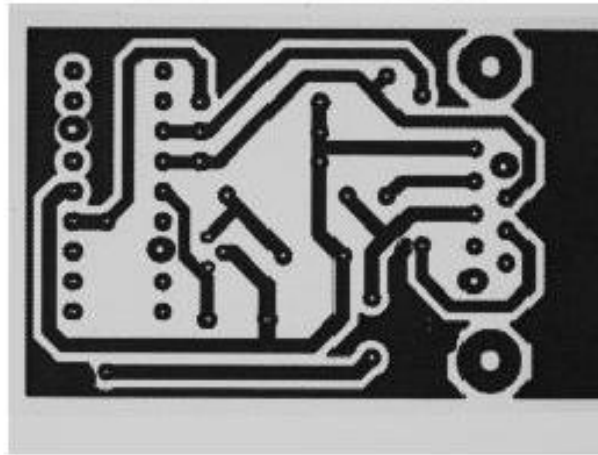


# Under etch test results in real-life test conditions

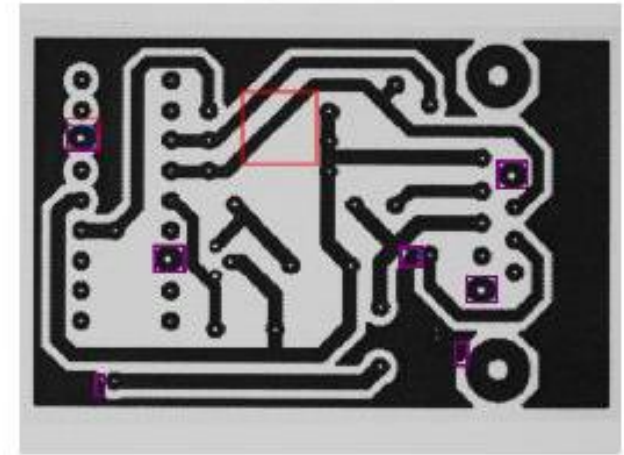
Templet Image



Inspection Image

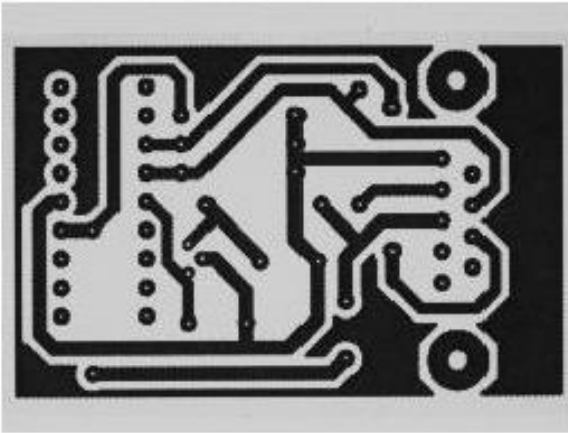


Defects

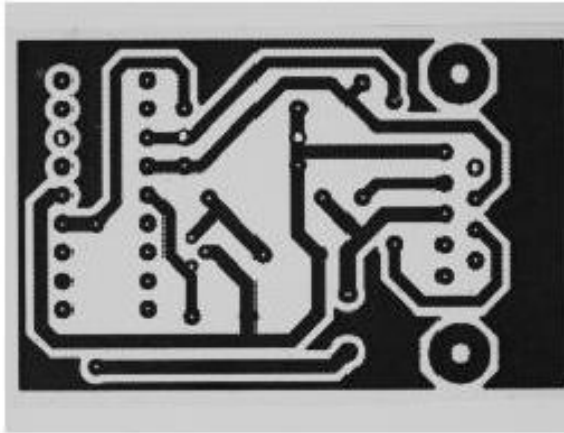


# Wrong size hole & Missing hole test results in real-life test conditions

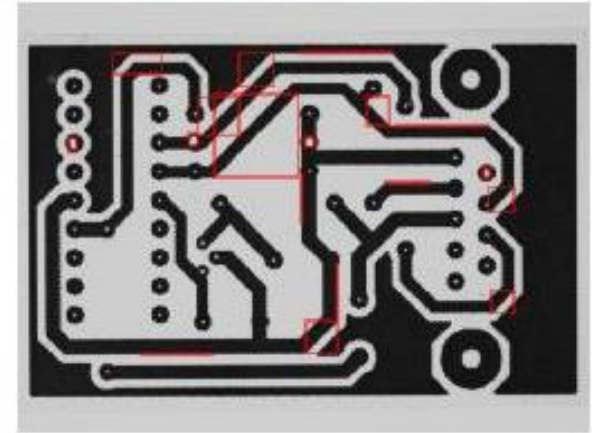
Templet Image



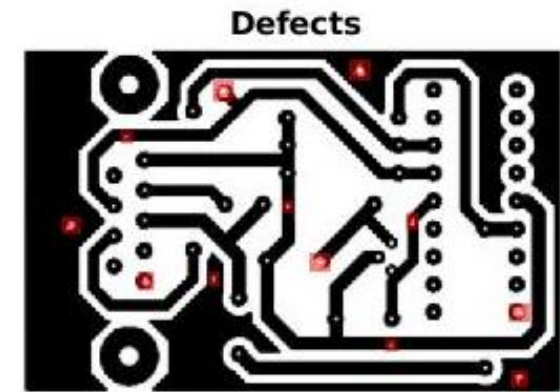
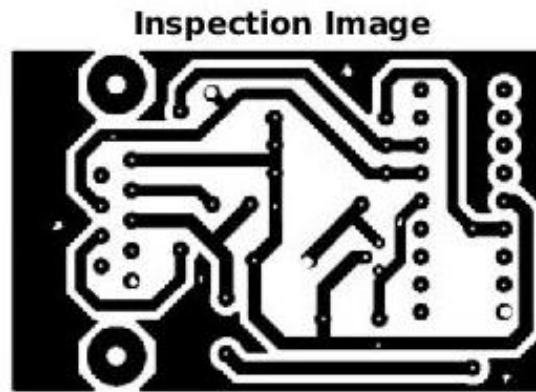
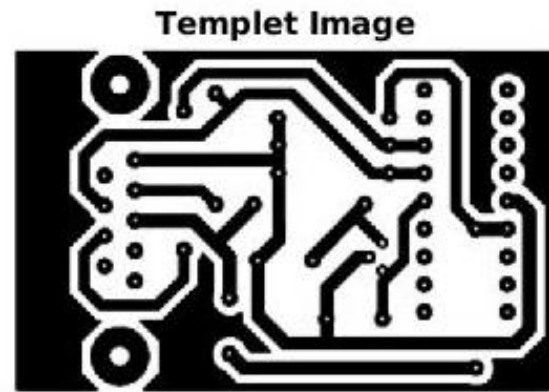
Inspection Image



Defects

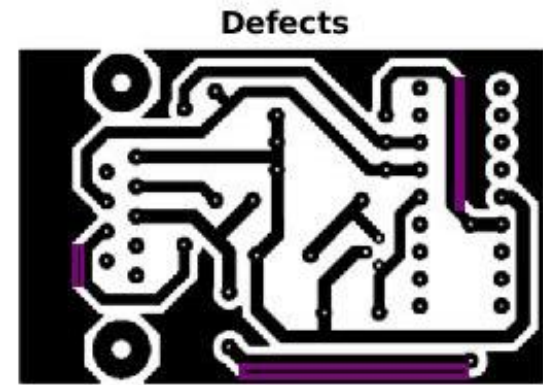
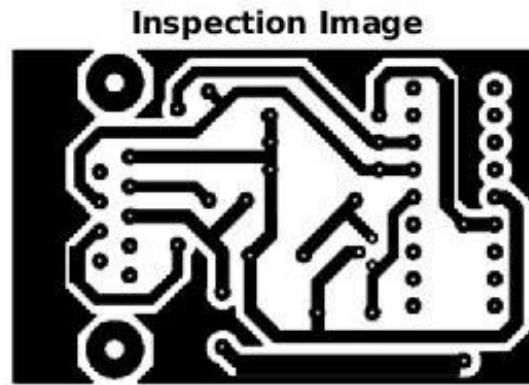
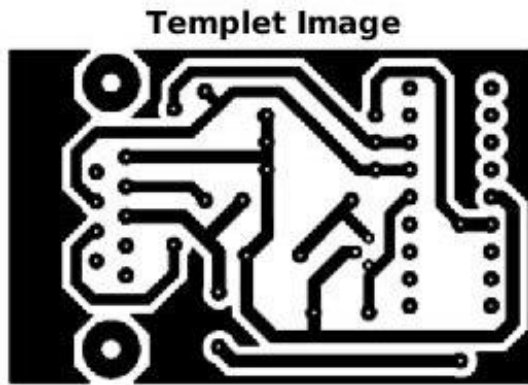


# Breakouts & Pinholes test results in ideal test conditions



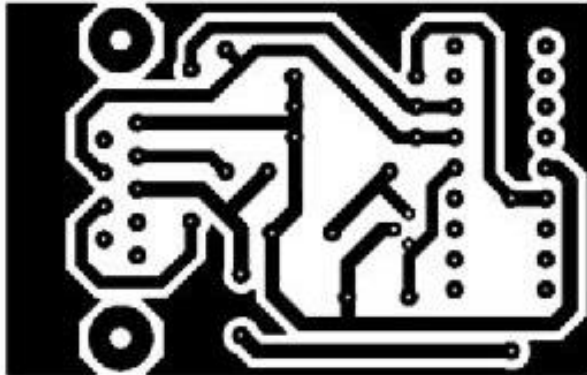


# Conductor too close test results in ideal test conditions

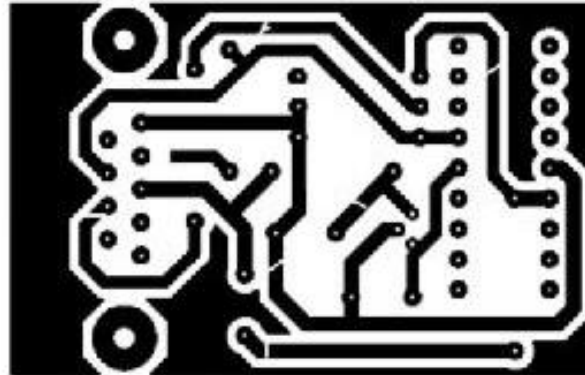


# Missing Conductor & Open circuits test results in ideal test conditions

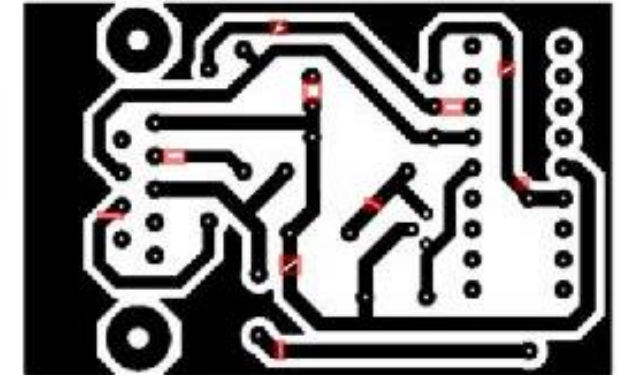
Templet Image



Inspection Image

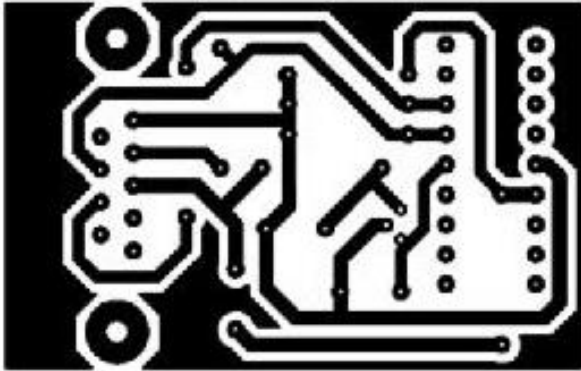


Defects

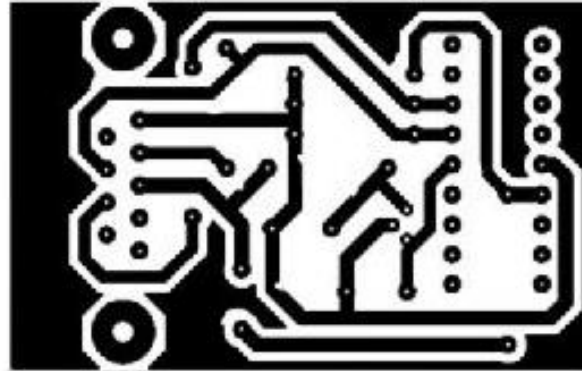


# Mouses bite & Over etch test results in ideal test conditions

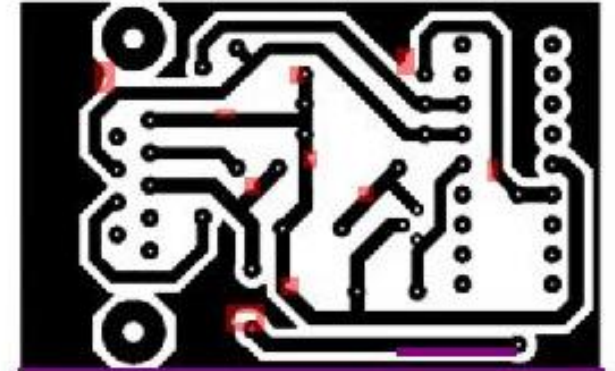
Templet Image



Inspection Image

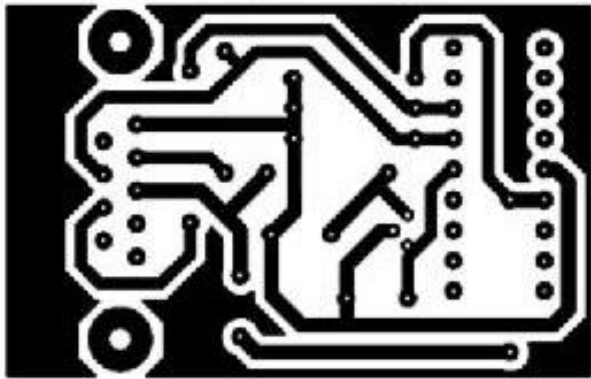


Defects

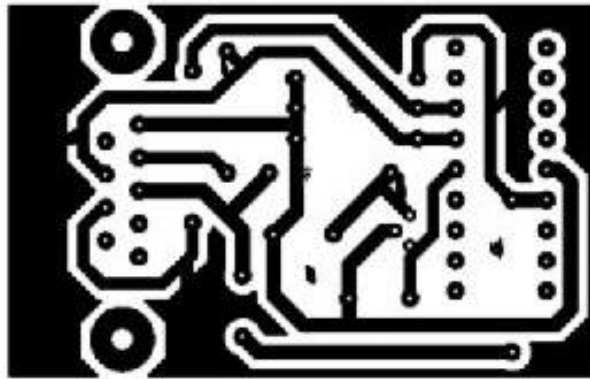


# Spur, Spurious copper, Excessive Shorts & Shorts test results in real-life test conditions

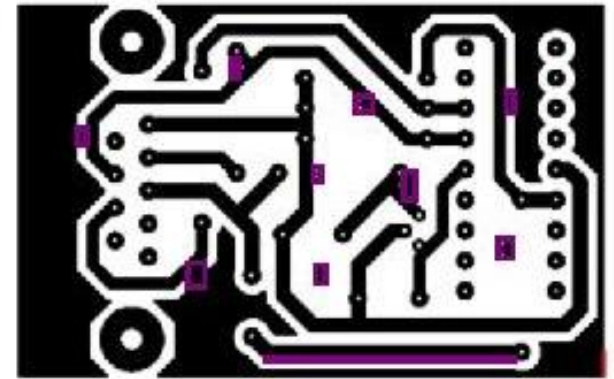
Templet Image



Inspection Image

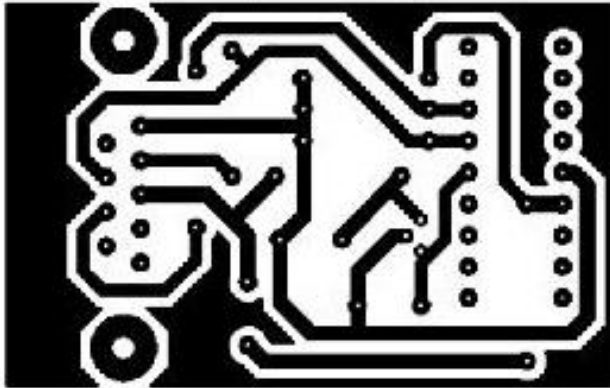


Defects

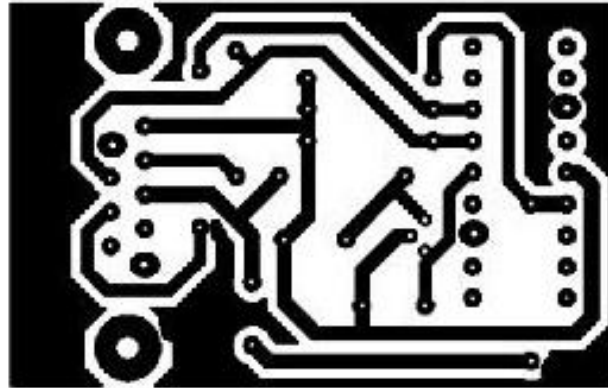


# Under etch test results in real-life test conditions

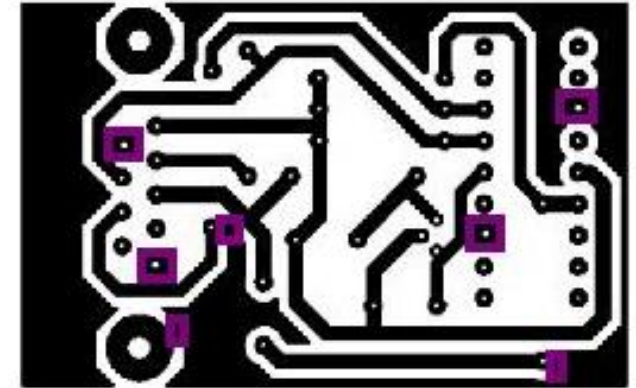
Templet Image



Inspection Image



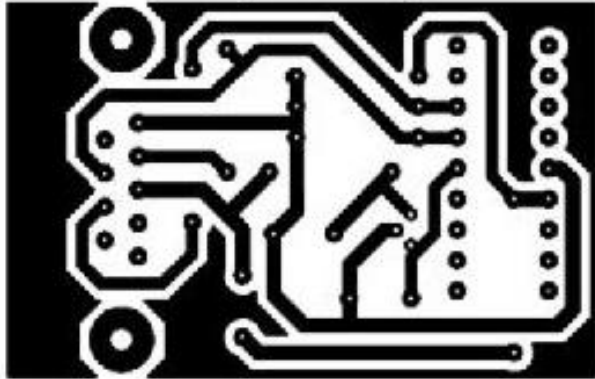
Defects



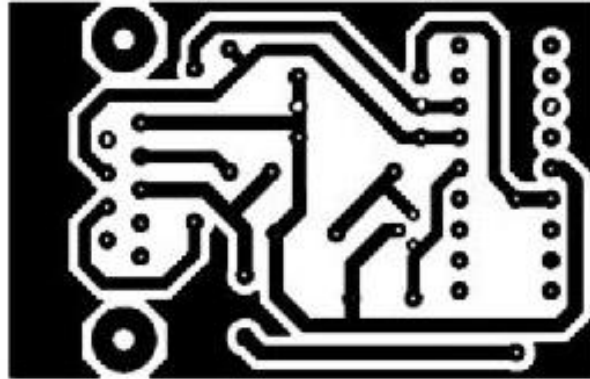


# Wrong size hole & Missing hole test results in real-life test conditions

Templet Image



Inspection Image



Defects

