

THE VILLAGE - NEIGHBORHOOD - HOME PLAN
FOR
HOUSING AND CARE OF 10,000 NEW YORK CITY SCHOOL CHILDREN

Submitted by

LIFE CAMPS, INC.
14 West 49th St., New York, N.Y.
February 9, 1942

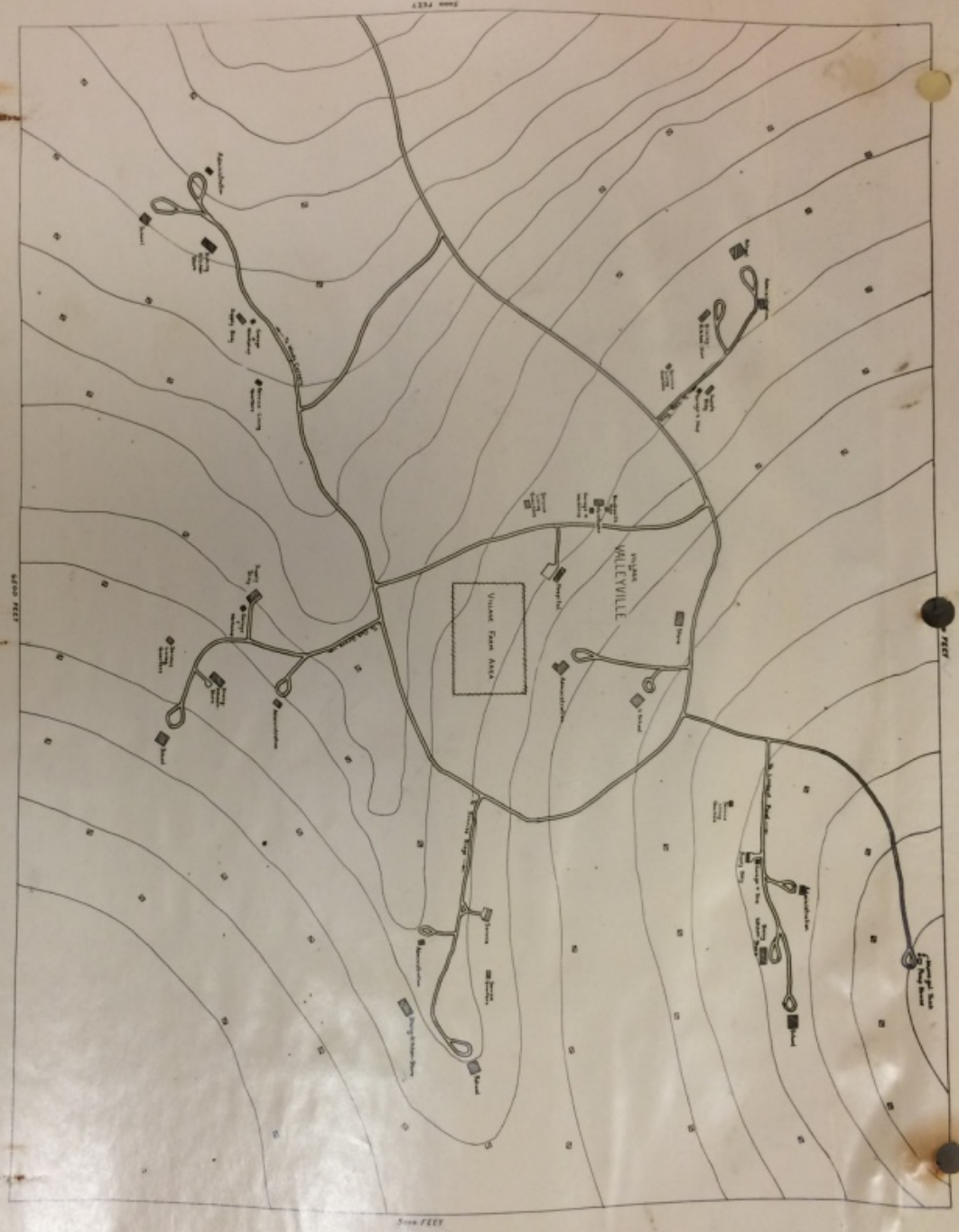
*Return
to
L. S. Bay*

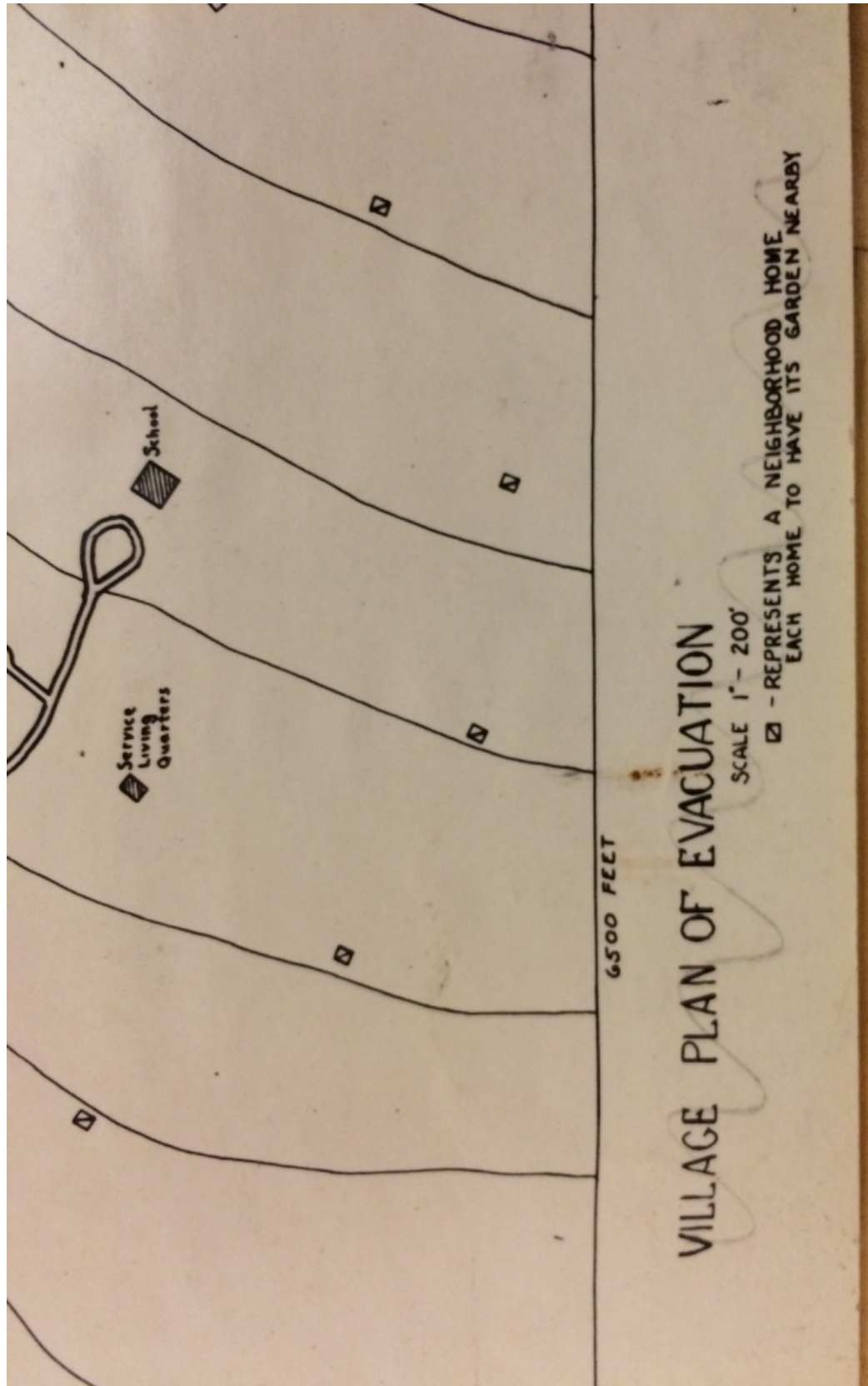
60W

VILLAGE PLAN OF EMUCLATION

Scale 1" = 200'
10' - 20' - 30' - 40' - 50' - 60' - 70' - 80' - 90' - 100' - 110' - 120' - 130' - 140' - 150' - 160' - 170' - 180' - 190' - 200'

SUBMITTED BY: L. F. CAMPBELL, INC.
1000 10th Street
St. Paul, Minn.
1911





SUBMITTED BY: LIFE CAMPS, INC.
14 WEST 49 STREET,
NEW YORK CITY.
JANUARY 28, 1942.

NEARBY